



GMT MONTHLY MEMBERSHIP PROGRESS REPORT

Results as of: 3/31/2024

Multiple District 27

LOCATION: WISCONSIN

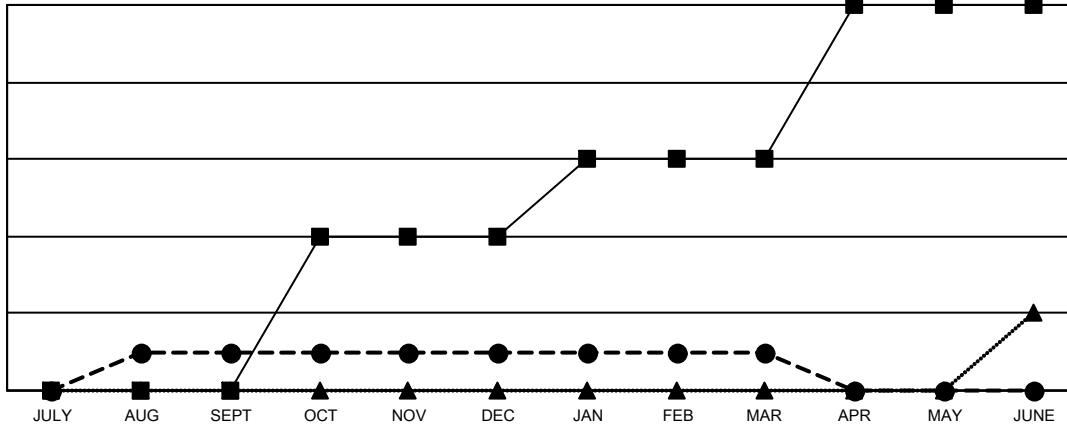
GMT: OPEN

GMT CA 1

| Clubs | | | |
|-----------------------|---------------|-----------|---------------|
| RESULTS FOR 2023-2024 | | | |
| QUARTER | NEW CLUB GOAL | NEW CLUBS | DROPPED CLUBS |
| JULY/AUG/SEPT | 0 | 1 | 0 |
| OCT/NOV/DEC | 4 | 0 | 2 |
| JAN/FEB/MAR | 2 | 0 | 0 |
| APR/MAY/JUNE | 4 | 0 | 0 |

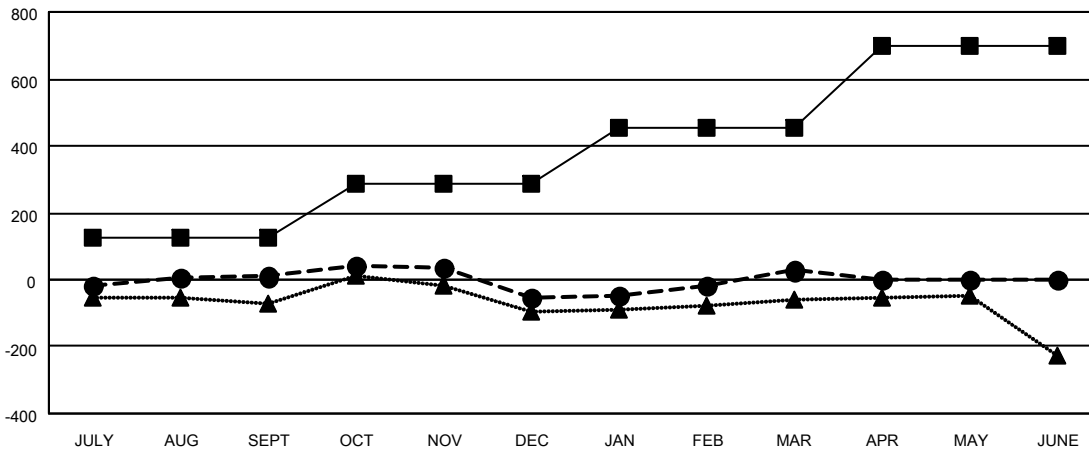
| Members | | | |
|-----------------------|------------------------|----------------------|----------------------------------------------|
| RESULTS FOR 2023-2024 | | | |
| QUARTER | MEMBER GROWTH NET GOAL | MEMBER GROWTH ACTUAL | DROPPED MEMBERS ACTUAL (including transfers) |
| JULY/AUG/SEPT | 126 | 393 | 356 |
| OCT/NOV/DEC | 159 | 366 | 391 |
| JAN/FEB/MAR | 170 | 384 | 272 |
| APR/MAY/JUNE | 242 | 0 | 0 |

GOALS AND ACTUAL NEW CLUBS CUMULATIVE



- - CURRENT YEAR GOALS FOR NEW CLUBS
- - CURRENT YEAR ACTUAL NEW CLUBS
- ▲ - LAST YEAR ACTUAL NEW CLUBS

GOALS AND ACTUAL MEMBERS CUMULATIVE



- - MEMBER GROWTH NET GOAL
- - MEMBER GROWTH ACTUAL
- ▲ - LAST YEAR MEMBERSHIP ACTUAL

| | |
|------------------------|--------------|
| DROPPED CLUBS: 2 | |
| DROPPED MEMBERS | |
| DECEASED | 193 |
| CLUB CANCELLED | 0 |
| OTHER | 826 |
| TOTAL | 1,019 |

321 CLUBS OF 505 ADDED 1 OR MORE NEW MEMBERS

| GENDER DISTRIBUTION | |
|---------------------|-----------------|
| MALE | 11,800 (70.29%) |
| FEMALE | 4,988 (29.71%) |

[CLICK HERE FOR CUMULATIVE MEMBERSHIP DATA](#)

| | |
|---------------------------------|-------|
| TOTAL FAMILY UNIT MEMBERS | 3,605 |
| FAMILY MEMBERS PAYING HALF DUES | 1,831 |